

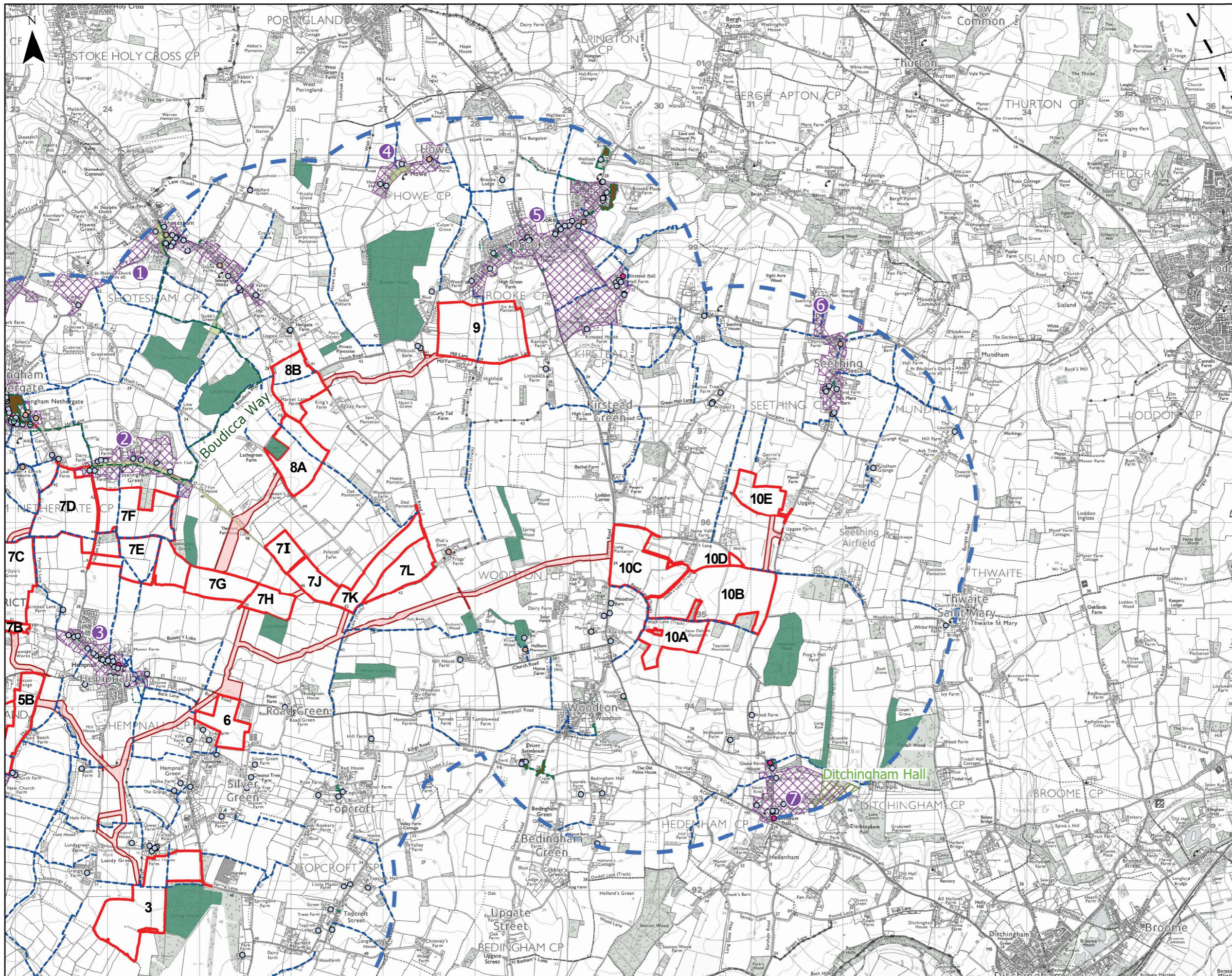
### Legend

- The Site Boundary
- Cable Route Corridor
- Wider Search Area
- Study Area
- Listed Buildings<sup>1</sup>
  - I
  - II
  - II\*
- Public Rights of Way (PROW)<sup>3</sup>
- Recreational Routes<sup>3</sup>
- National Cycle Network<sup>4</sup>
- Conservation Areas<sup>5</sup>
  - 1. Wymondham
  - 2. Mulbarton
  - 3. Shotesham
  - 4. Stoke Holy Cross
  - 5. Bergh Apton
  - 6. Loddon
  - 7. Tacolneston
  - 8. Forncett
  - 9. Hedenham
  - 10. Ellingham Mill
  - 11. Gissing
  - 12. Burston
  - 13. Dickleburgh
  - 14. Pulham Market
  - 15. Pulham St Mary
  - 16. Starston
  - 17. Harleston
  - 18. Homersfield
  - 19. Ditchingham
  - 20. Bungay
  - 21. Chedgrave
- Scheduled Monuments<sup>1</sup>
- Registered Parks and Gardens<sup>1</sup>
- CRoW Access Land<sup>2</sup>
- Local Nature Reserves<sup>2</sup>
  - A. Dunston Common
  - B. Smockmill Common
  - C. Bath Hills
  - D. Broome Heath
- Ancient Woodland<sup>2</sup>
- National Park - The Broads<sup>6</sup>
- Tree Preservation Orders<sup>7</sup>

NOTES:

1. Historic England. <https://historicengland.org.uk> (Accessed: 11.07.2024)
2. Natural England. <https://www.gov.uk/government/organisations/natural-england> (Accessed: 11.07.2024)
3. Bing Maps. <https://www.bing.com/maps/?cp=52.433827%7E-1.638336&vl=11.0> and LDWA. [https://ldwa.org.uk/ldp/members/search\\_by\\_path.php](https://ldwa.org.uk/ldp/members/search_by_path.php)
4. Sustrans. <https://www.sustrans.org.uk/national-cycle-network/> (Accessed: 11.07.2024)
5. South Norfolk and Broadland. <https://www.south-norfolkandbroadland.gov.uk/conservation-areas-south-norfolk> (Accessed: 11.07.2024)
6. Broads Authority. <https://www.broads-authority.gov.uk/> (Accessed 14.08.2024)
7. South Norfolk and Broadland Council. <https://www.southnorfolkandbroadland.gov.uk/planning/conservation/trees-hedges/protected-trees/check-if-a-tree-is-protected> (Accessed 15.04.2025)

See figures 7.1.2 - 7.1.4 for designations inside study area



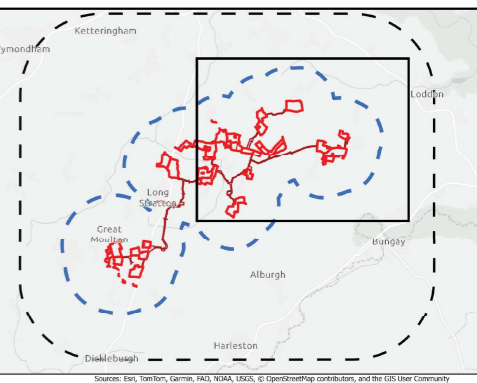
**Legend**

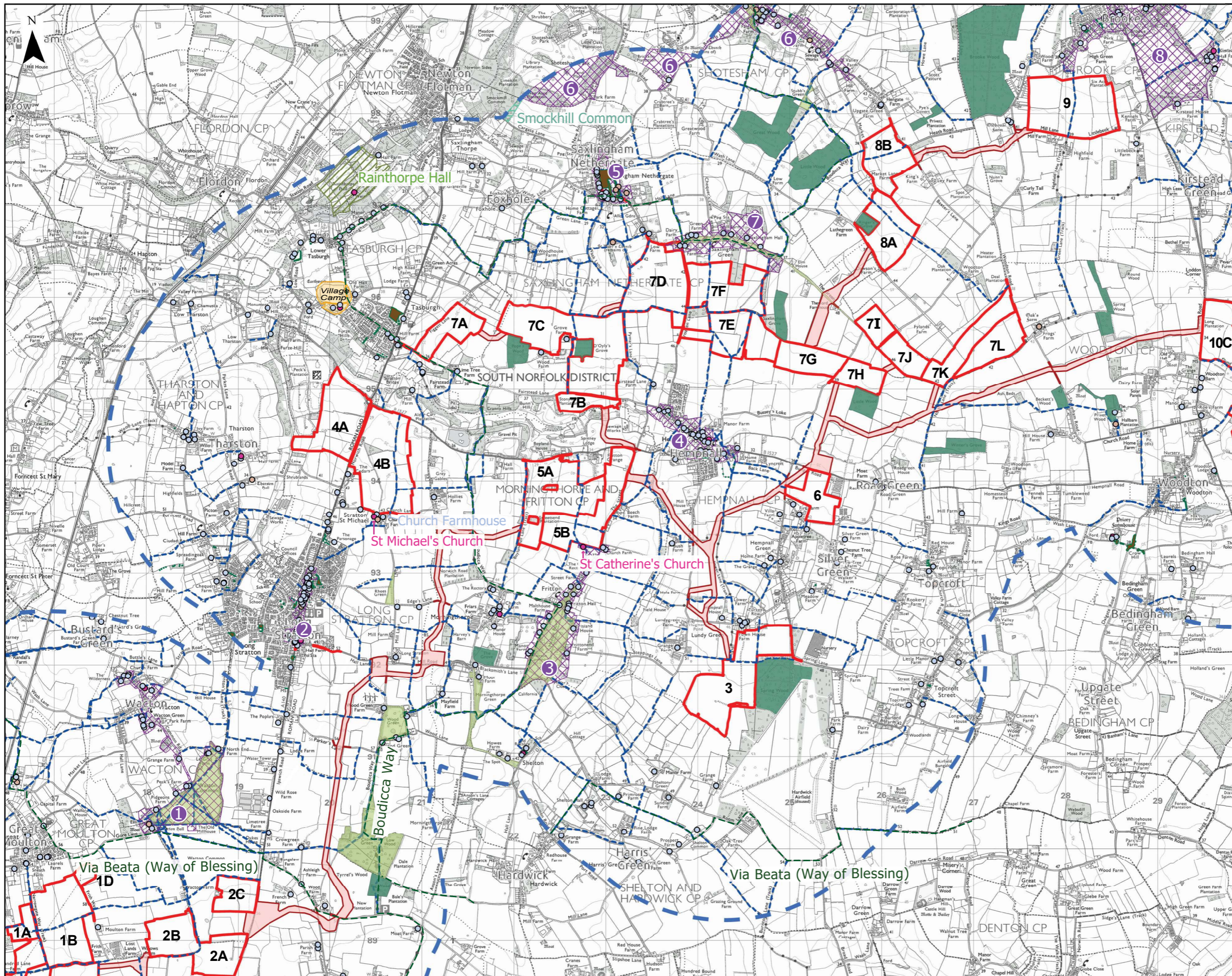
- The Site Boundary
- Cable Route Corridor
- Study Area
- Listed Buildings<sup>1</sup>
  - I
  - II
  - II\*
- Public Rights of Way (PRoW)<sup>3</sup>
- Recreational Routes<sup>3</sup>
- Conservation Areas<sup>4</sup>
  - 1. Shotesham
  - 2. Saxlingham Green
  - 3. Hempnall
  - 4. Howe
  - 5. Brooke
  - 6. Seething
  - 7. Hedenham
- Registered Parks and Gardens<sup>1</sup>
- CRoW Access Land<sup>2</sup>
- Ancient Woodland<sup>2</sup>
- Tree Preservation Orders<sup>5</sup>

**NOTES:**

1. Historic England. <https://historicengland.org.uk> (Accessed: 11.07.2024)
2. Natural England. <https://www.gov.uk/government/organisations/natural-england> (Accessed: 11.07.2024)
3. Bing Maps. <https://www.bing.com/maps/?cp=52.433827%7E-1.638336&lvl=11.0&LDWA>. [https://ldwa.org.uk/ldp/members/search\\_by\\_path.php](https://ldwa.org.uk/ldp/members/search_by_path.php)
4. South Norfolk and Broadland. <https://www.south-norfolkandbroadland.gov.uk/conservation-areas-south-norfolk> (Accessed: 11.07.2024)
5. South Norfolk and Broadland Council. <https://www.south-norfolkandbroadland.gov.uk/planning/conservation/trees-hedges/protected-trees/check-if-a-tree-is-protected> (Accessed 15.04.2025)

**Key Diagram:**





### Legend

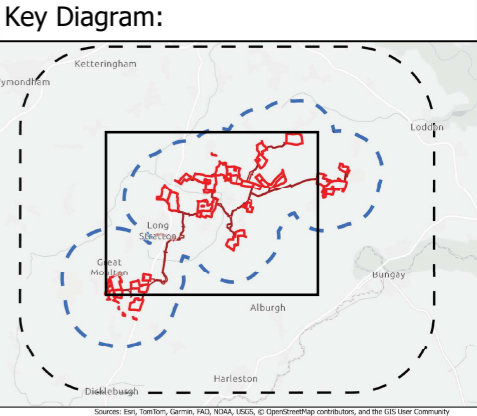
- The Site Boundary
- Cable Route Corridor
- Study Area

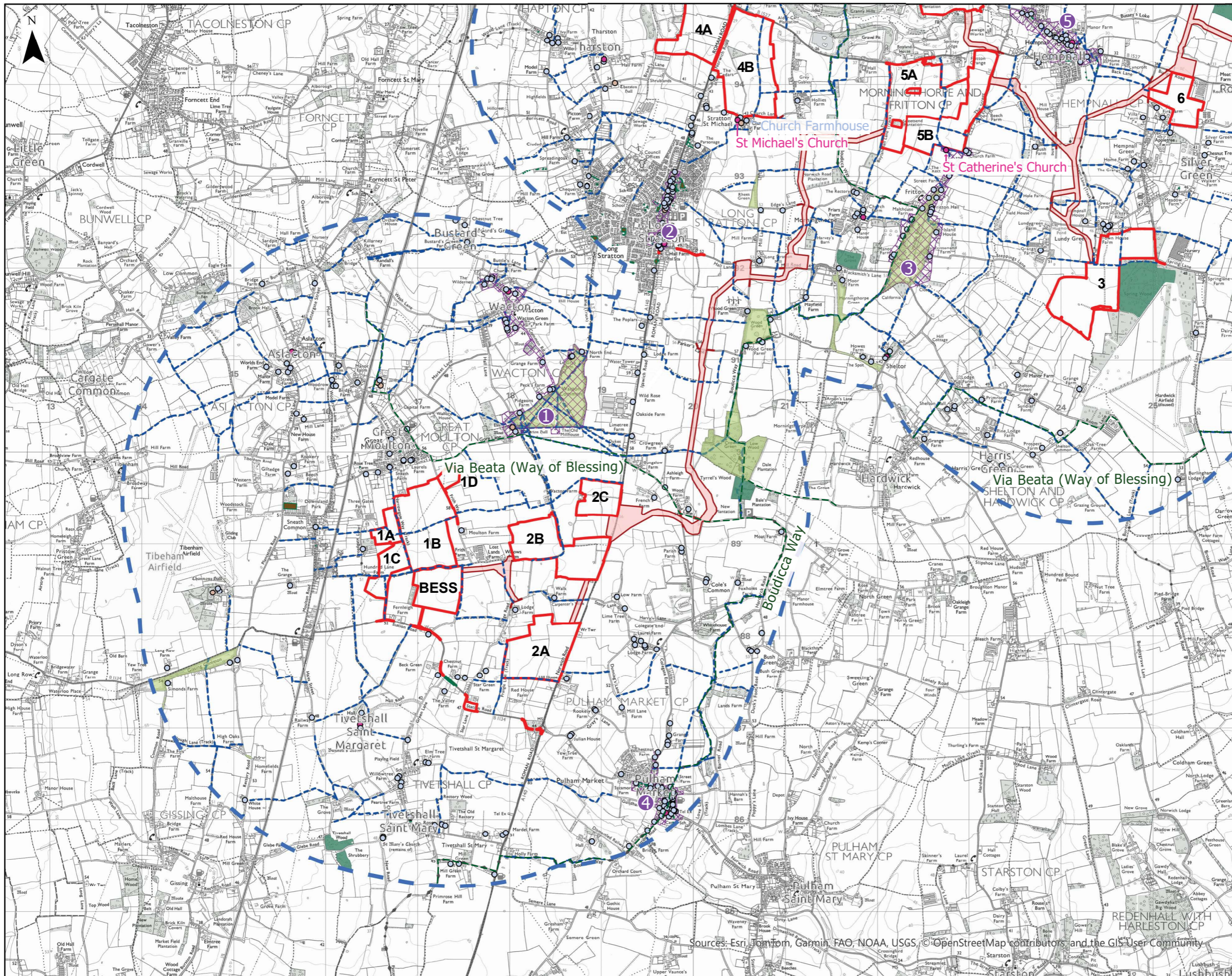
Listed Buildings<sup>1</sup>

- I
- II
- II\*

- Public Rights of Way (PRoW)<sup>3</sup>
- Recreational Routes<sup>3</sup>
- Conservation Areas<sup>4</sup>
  - 1. Wacton
  - 2. Long Stratton
  - 3. Fritton
  - 4. Hempsall
  - 5. Saxlingham Nethergate
  - 6. Shotesham
  - 7. Saxlingham Green
  - 8. Brooke
- Scheduled Monuments<sup>1</sup>
- Registered Parks and Gardens<sup>1</sup>
- CRoW Access Land<sup>2</sup>
- Ancient Woodland<sup>2</sup>
- Local Nature Reserves<sup>2</sup>
- Tree Preservation Orders<sup>5</sup>

- NOTES:
1. Historic England. <https://historicengland.org.uk> (Accessed: 11.07.2024)
  2. Natural England. <https://www.gov.uk/government/organisations/natural-england> (Accessed: 11.07.2024)
  3. Bing Maps. [https://www.bing.com/maps/?cp=52.433827%E-1.638336&vl=11.0&LDWA=https://ldwa.org.uk/ldp/members/search\\_by\\_path.php](https://www.bing.com/maps/?cp=52.433827%E-1.638336&vl=11.0&LDWA=https://ldwa.org.uk/ldp/members/search_by_path.php)
  4. South Norfolk and Broadland. <https://www.south-norfolkandbroadland.gov.uk/conservation-areas-south-norfolk> (Accessed: 11.07.2024)
  5. South Norfolk and Broadland Council. <https://www.southnorfolkandbroadland.gov.uk/planning/conservation/trees-hedges/protected-trees/check-if-a-tree-is-protected> (Accessed 15.04.2025)





### Legend

- The Site Boundary
- Cable Route Corridor
- Study Area

Listed Buildings<sup>1</sup>

- I
- II
- II\*

- Public Rights of Way (PRoW)<sup>3</sup>
- Recreational Routes<sup>3</sup>
- Conservation Areas<sup>4</sup>
  1. Wacton
  2. Long Stratton
  3. Fritton
  4. Pulham Market
  5. Hempsall
- CROW Access Land<sup>2</sup>
- Ancient Woodland<sup>2</sup>
- Tree Preservation Orders<sup>5</sup>

- NOTES:
1. Historic England. <https://historicengland.org.uk> (Accessed: 11.07.2024)
  2. Natural England. <https://www.gov.uk/government/organisations/natural-england> (Accessed: 11.07.2024)
  3. Bing Maps. <https://www.bing.com/maps/?cp=52.433827%7E-1.638336&lvl=11.0> and LDWA. [https://ldwa.org.uk/ldp/members/search\\_by\\_path.php](https://ldwa.org.uk/ldp/members/search_by_path.php)
  4. South Norfolk and Broadland. <https://www.south-norfolkandbroadland.gov.uk/conservation-areas-south-norfolk> (Accessed: 11.07.2024)
  5. South Norfolk and Broadland Council. <https://www.southnorfolkandbroadland.gov.uk/planning/conservation/trees-hedges/protected-trees/check-if-a-tree-is-protected> (Accessed 15.04.2025)

